

BG покривни изходи

ES claraboyas

GR Φεγγίτης

MK izlaz na krov

RO ferestre de acces pe acoperiș

SK výlezové okná

CZ střešní výlezy

FR châssis de toit

HU tetőkibúvó

PL wylazy dachowe

RU окнолюк

TR çatı çıkışı kapağı

DE die ausstiegsfenster

GB access rooflight

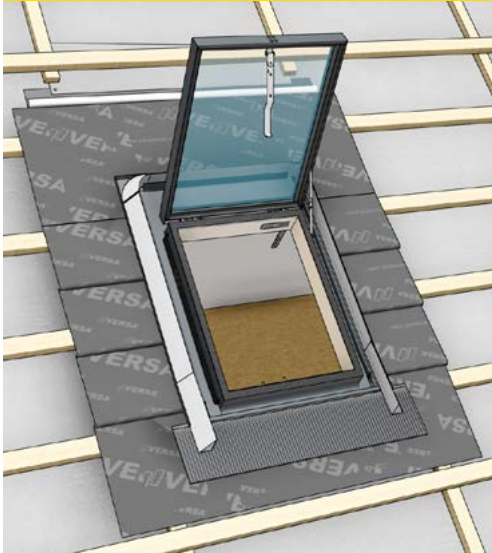
IT lucernaio de tetto

PT claraboia

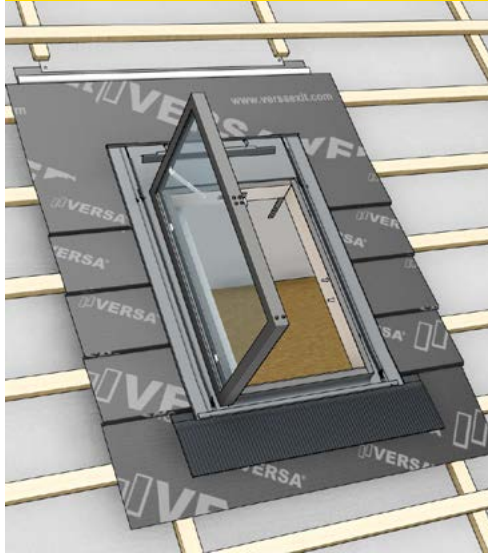
SE access ljusinsläpp

WVM+

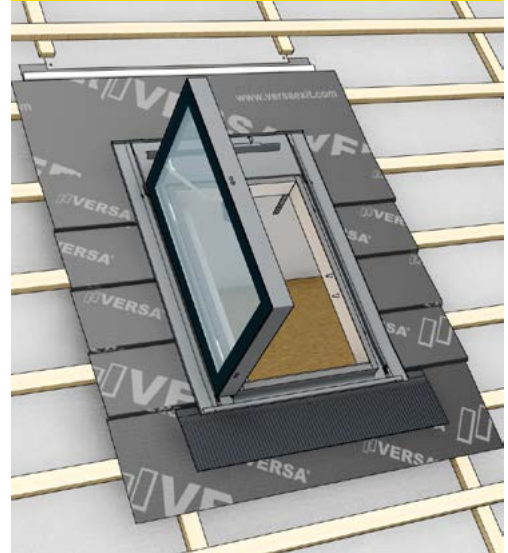
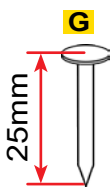
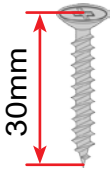
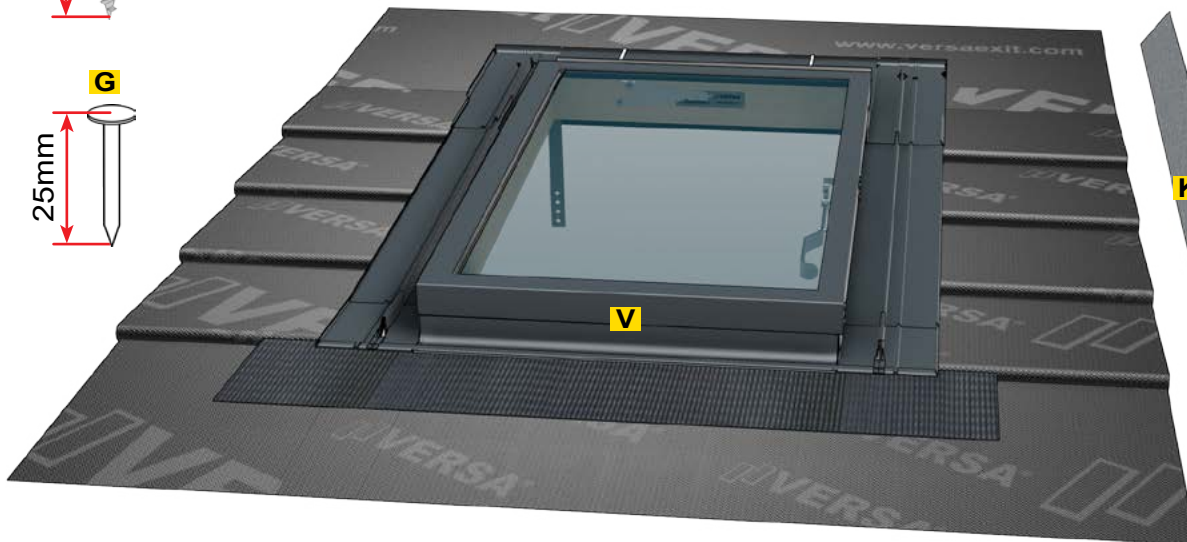
WVM+ 47×57

**WVD+**

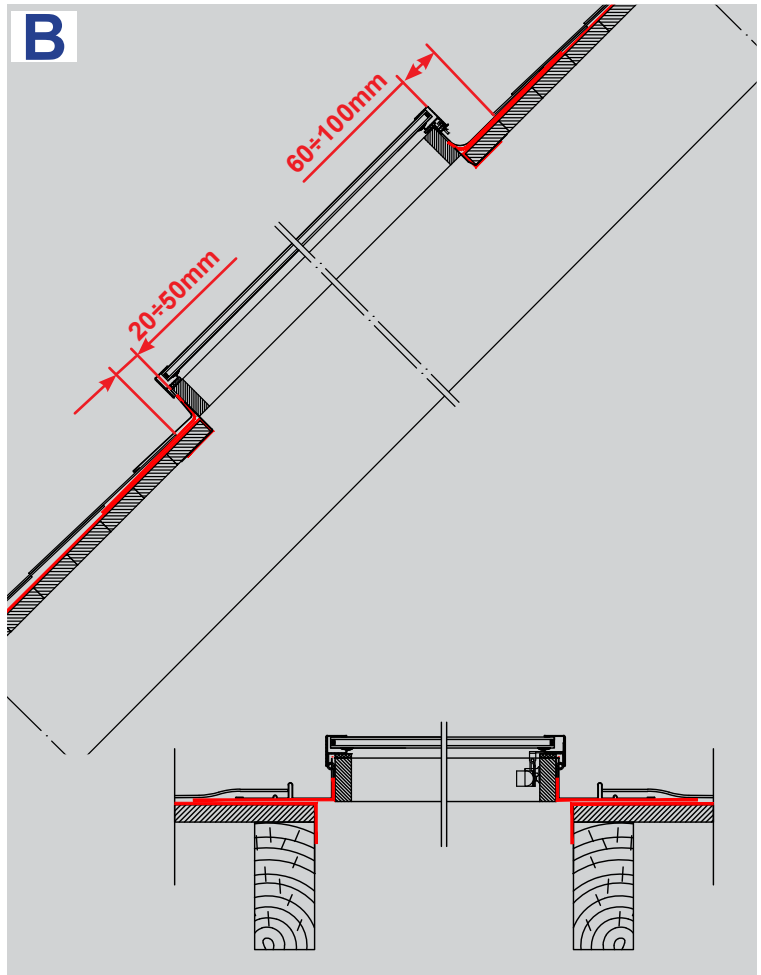
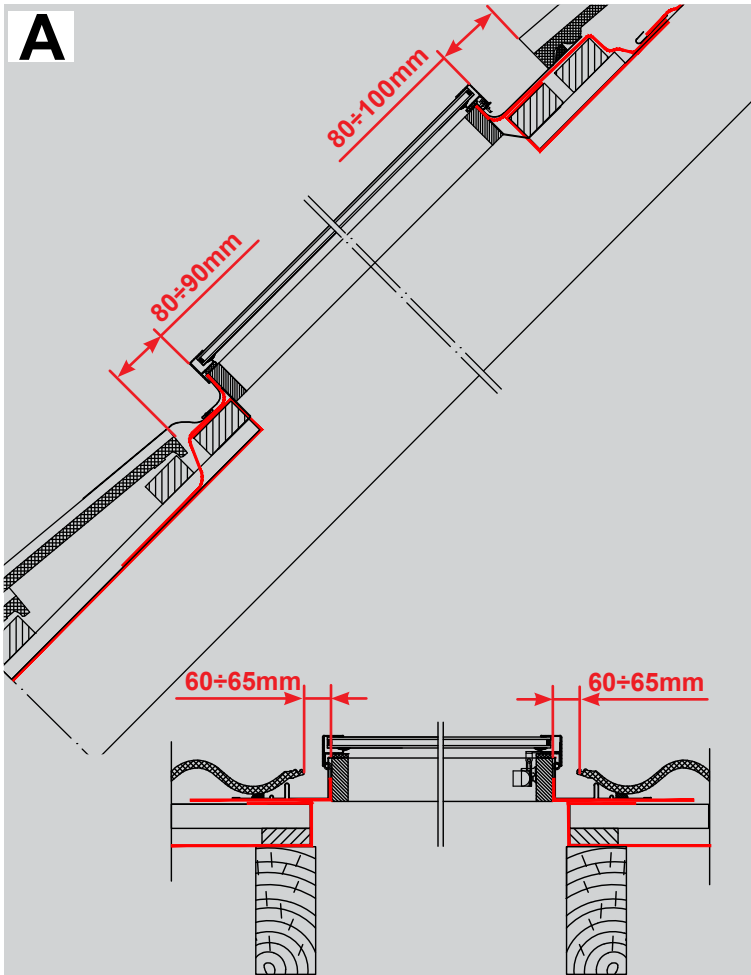
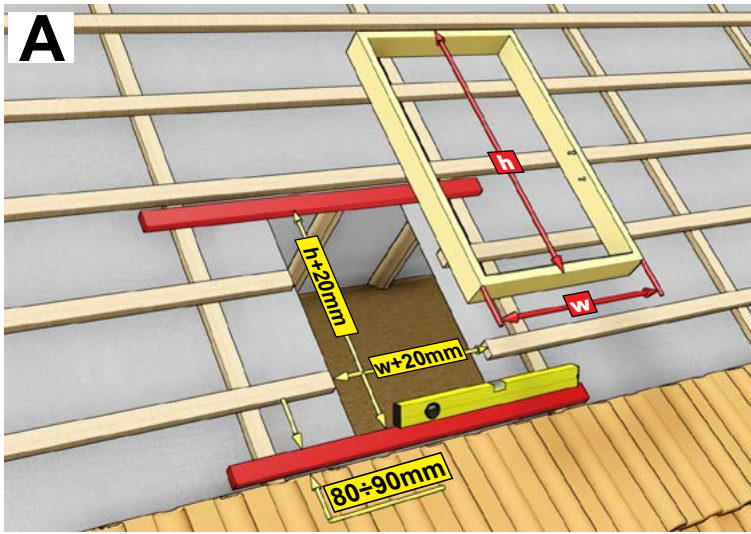
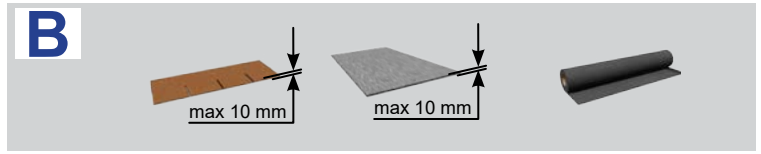
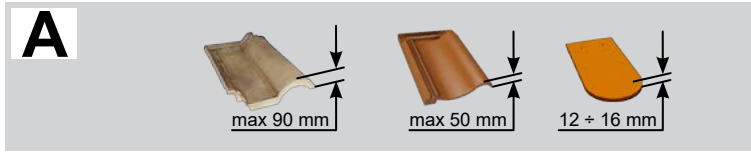
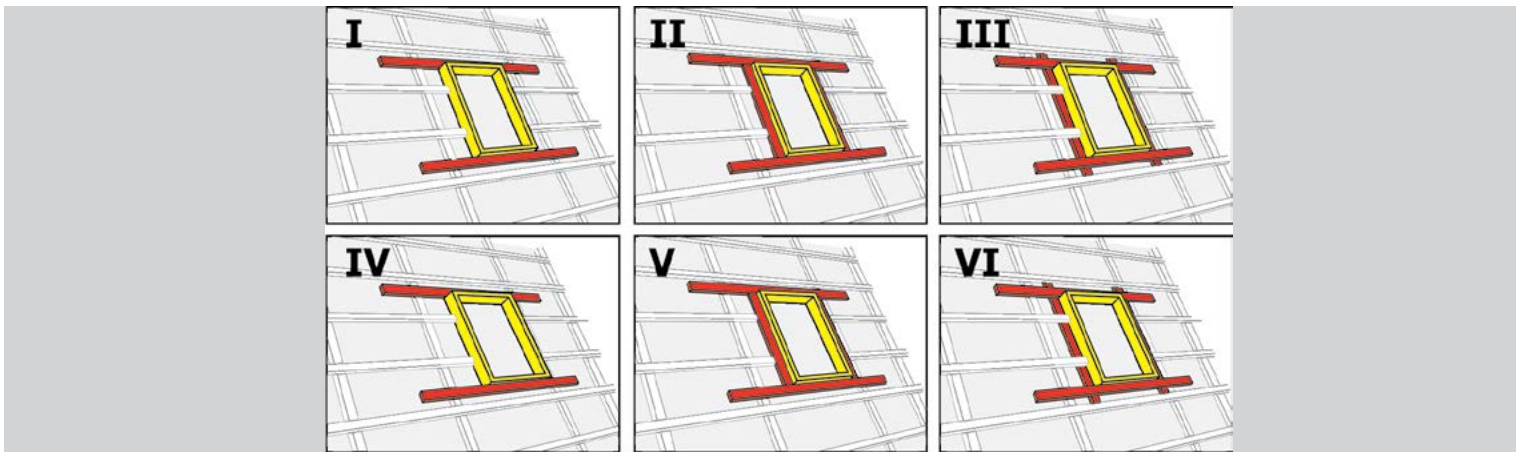
WVD+ 47×73
WVD+ 60×60
WVD+ 80×80
WVD+ 86×86

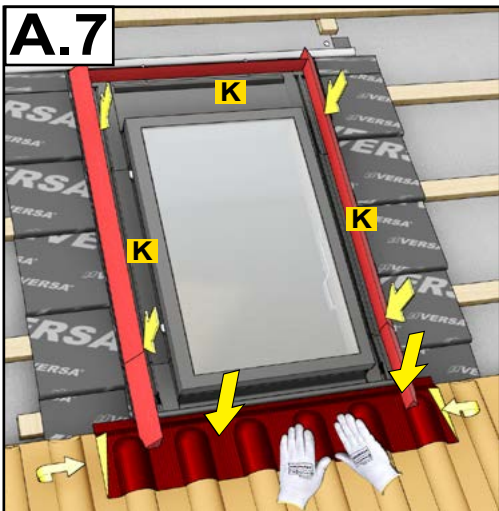
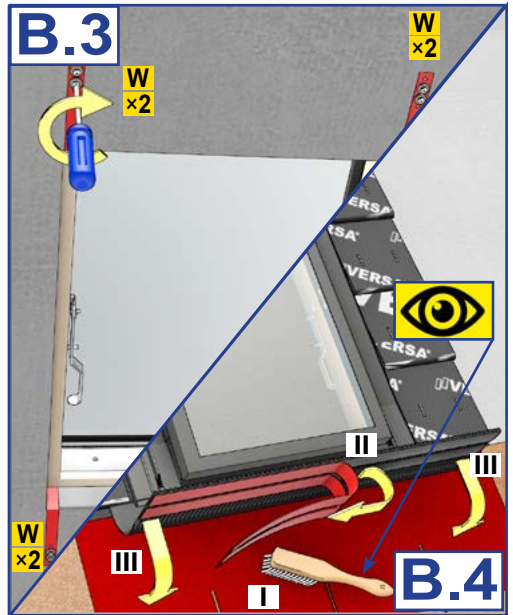
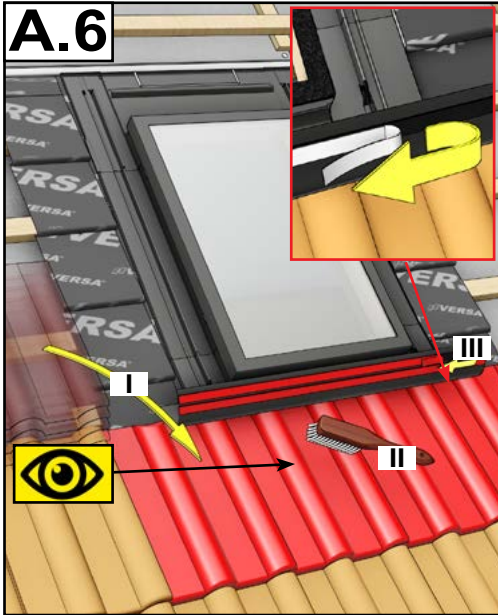
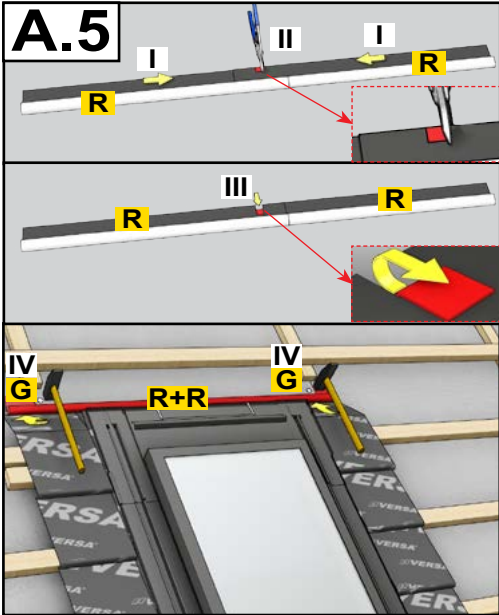
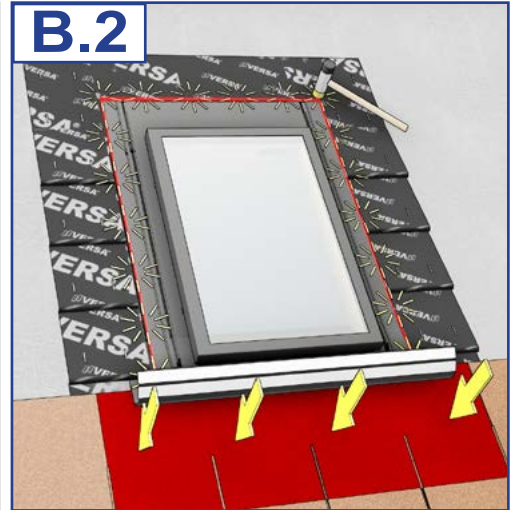
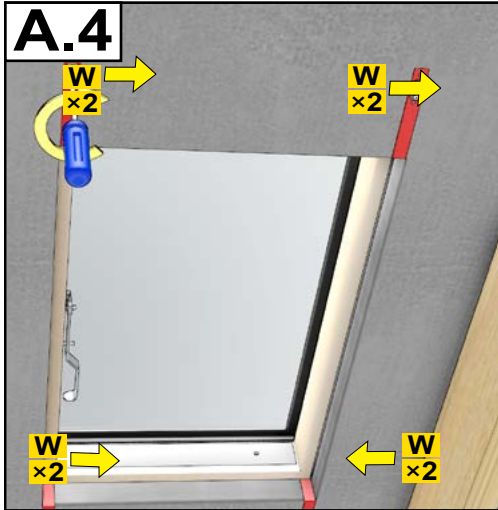
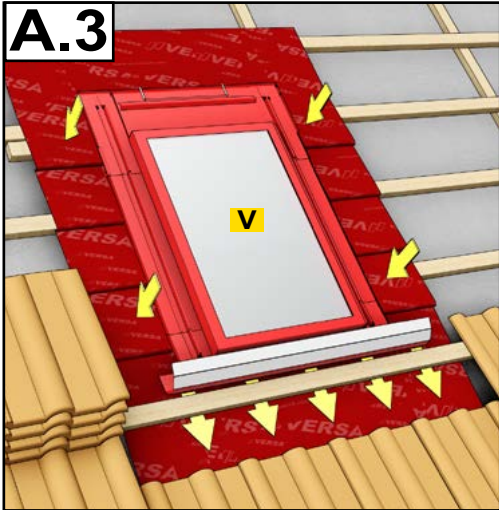
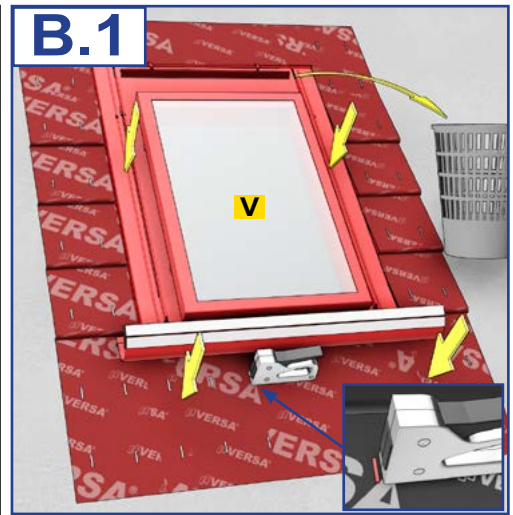
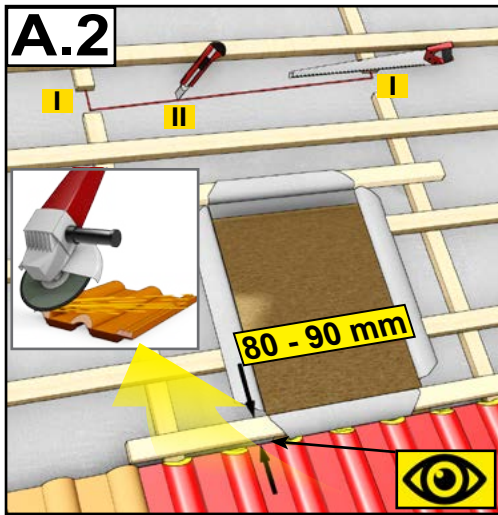
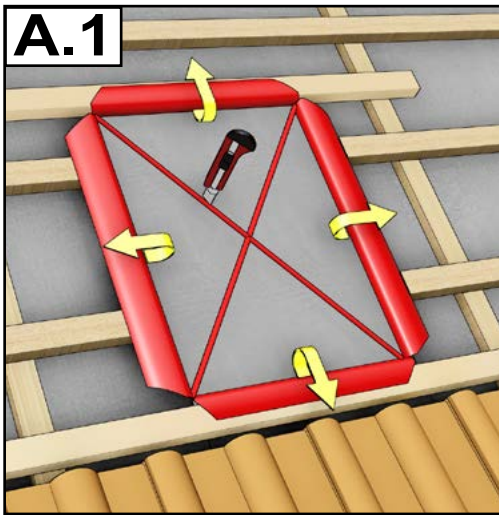
**WVB+**

WVB+ 47×73

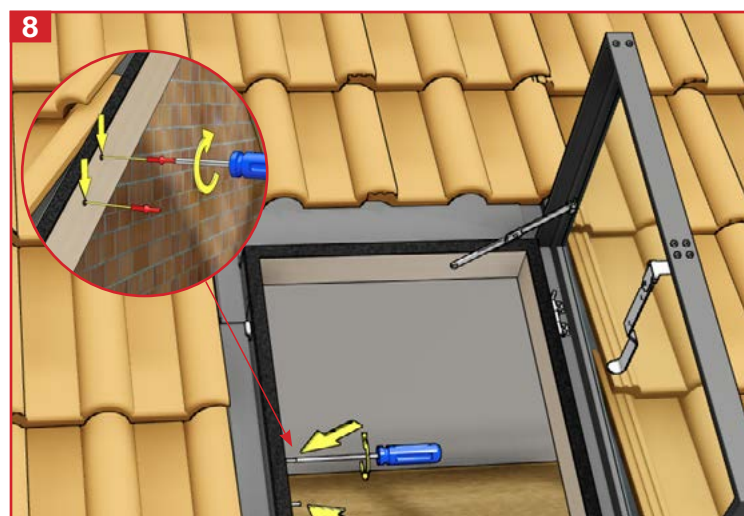
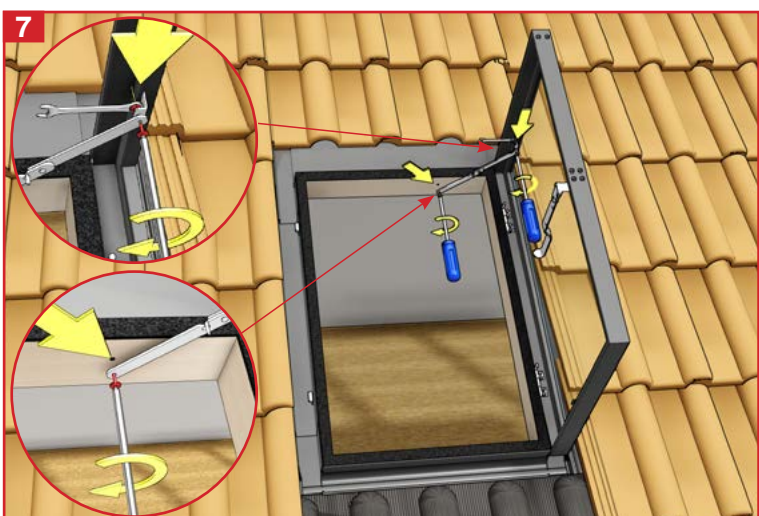
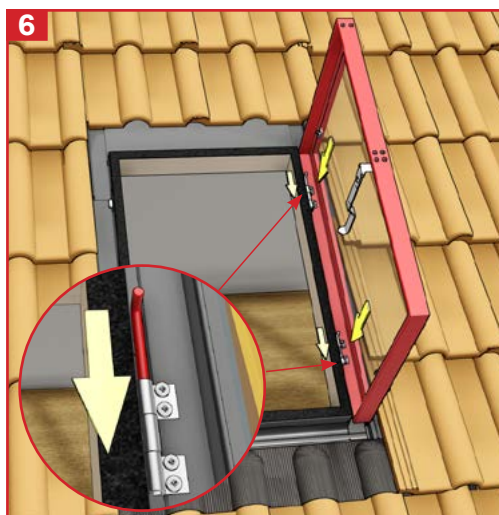
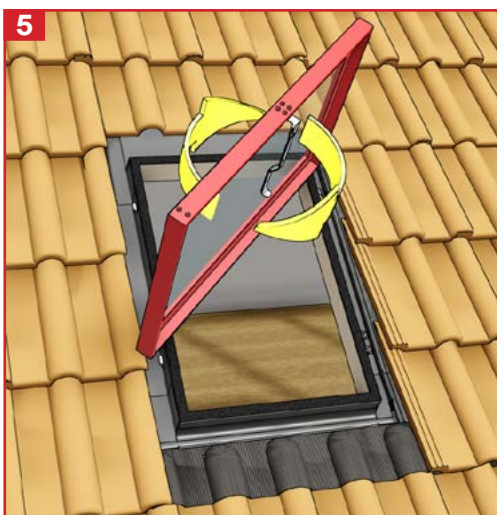
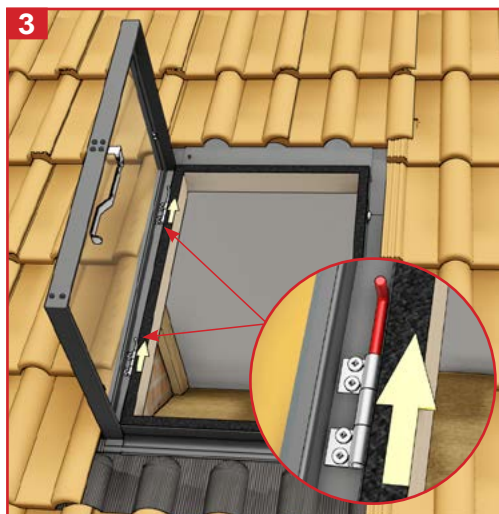
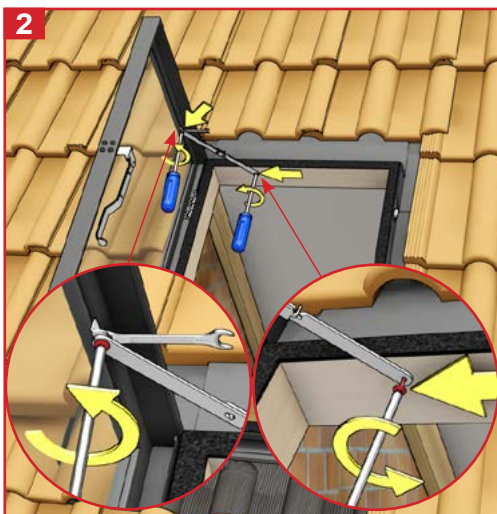
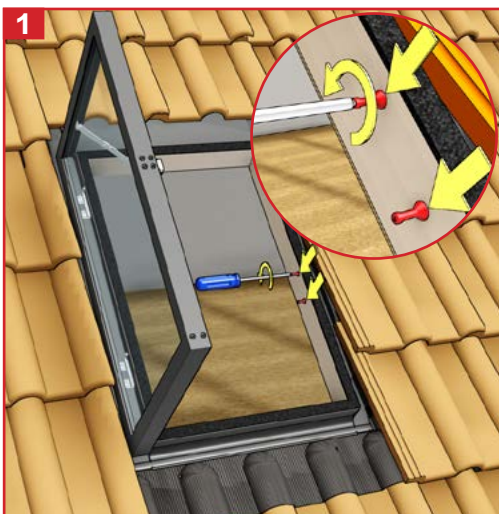
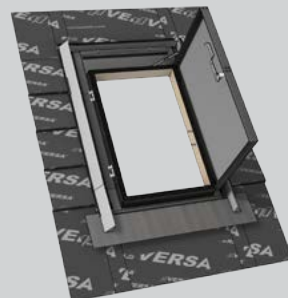
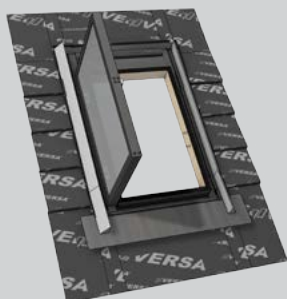
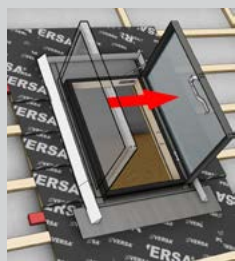
**W****G****K****K****K**

15° - 65°





WVD+
WVB+



OKPOL Sp. z o.o.
e-mail: okpol@okpol.pl
e-mail: serwis@okpol.pl
www.okpol.com



Producent zastrzega, iż nie będzie ponosił żadnej odpowiedzialności za nieprzestrzeganie wymogów bezpieczeństwa oraz przepisów prawa jak również prawa budowlanego przez właściciela, użytkownika, montażystę oraz architekta.

The manufacturer reserves that it will not incur any liability for failure to comply with safety requirements and laws as well as construction law by the owner, operator, fitter and architect.